

# Tom McCall Preserve's Most Wanted Weeds

Please report these plants!

## All Knapweeds (except bachelor's button)



Diffuse knapweed



Meadow knapweed



Russian knapweed



Spotted knapweed



Squarrose knapweed

**Knapweeds** will be found as a basal rosette in fall and winter. They bolt in May, and flowers from June until August

## Note: Please do not report bachelor's button

Bachelor's button is an invasive plant similar in appearance to knapweeds. However, it is already present in large numbers at Tom McCall Preserve. Unfortunately, it is too late to manage this plant using early detection methods.



Photo by Annette Hoggenmeier

Distinguish bachelor's button from other knapweeds by:

Flowers generally blue-purple in color

Bracts not spine-tipped

There are small fuzzy (tomentose) hairs on the stems & leaves

## Puncture vine



Sharp woody burrs

Photo by Richard Old  
www.xtqservices.com

**Puncture vine** can be found from late spring through autumn. It is in bloom from July through October.

## Meadow hawkweed



Dandelion-like flowers

Bristly to hairy stems

UGA1196061

Look for **hawkweeds** in late May until September in open areas and modified habitats.

(More weeds on the back)

# Rush skeletonweed



Downward bent spines on the stem between the rosette and the first whorl of leaves

Lateral lobes of basal rosette point backwards



**Rush skeletonweed** flowers and sets seed July – September. Look for basal rosettes in late fall and early winter when it can be more easily controlled.

# Russian thistle

Many-branched spiny shrub

Stems with red stripes

Spine-tipped leaves

Spiny bracts

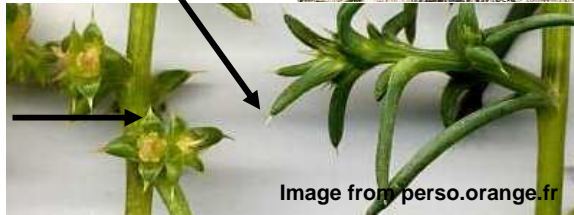


Image from perso.orange.fr

**Russian thistle** blooms from July through October, and breaks off to form “tumbleweeds” at maturity. It grows along roadsides, trails, and in moist areas.

# Tall oatgrass

Tall, perennial, clump-forming grass

Flowers with one long bent and twisted awn that looks like a single needle



OSU Jed Colquhoun photo Collection



Knolhavre

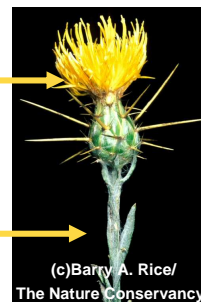
**Tall oatgrass** is found in fields, prairie, open ground, forest edges, waste places, and roadsides. **Note:** Only report if found in lower portion of the preserve

# Yellow starthistle

Yellow flowers and long, sharp spines

Deeply lobed leaves at base

Oblong, pointed leaves on stem



(c) Barry A. Rice / The Nature Conservancy



(c) Mandy Tu / The Nature Conservancy

**Yellow starthistle** flowers in July and August and grows in canyon grasslands, open woodlands, and disturbed areas.

To report these plants, follow the “WEED WATCHER PROTOCOL” outlined in your naturalist binder.

Thank you for helping keep these weeds out of Tom McCall Preserve.